

# FIJI AERONAUTICAL INFORMATION CIRCULAR



ISO 9001/2015 CERTIFIED

Civil Aviation Authority of Fiji  
Private Bag (NAP0354), Nadi Airport  
Republic of Fiji  
Tel: (679) 8923 155 / (679) 222 4222;  
Website: [www.caaf.org.fj](http://www.caaf.org.fj)

**AIC 03/24**

Effective  
**25 JAN 24**  
**ADM**

**This AIC replaces AIC 02/23 which is hereby cancelled.**

## MEDICAL STANDARDS, TESTS AND CERTIFICATION

### 1. Introduction

- 1.1 Air Navigation Regulation (ANR) 56 requires applicants for certain licences, permits and ratings issued or renewed by the Authority ANR 53 (2) and ANR 66 to go a medical examination conducted by an Approved Medical Authority.
- 1.2 This Circular contains the list the Approved Medical Authorities appointed by the Authority for this purpose and expands and clarifies on information contained within the CAAF Standards Document - Medical Standards, Tests and Certification. Refer to the Standards Document for all other matters relating to Aviation Medical requirements.

### 2. List of Approved Medical Authorities

#### 2.1 FIJI

#### NADI

DOCTOR	ADDRESS	TEL	FAX	EMAIL
Dr. R Raju CAAF AMA	2 Lodhia St. <b>NADI TOWN</b>  P. O. Box 87, Nadi	6700240 9920444	6702406	<a href="mailto:rriju@connect.com.fj">rriju@connect.com.fj</a>
Dr. L. William CAAF Specialist (Ophthalmology)	Concave Drive <b>NAMAKA</b>  P. O. Box 3041 Lautoka	6727944 9309450	--	<a href="mailto:louisejohn@connect.com.fj">louisejohn@connect.com.fj</a>
Dr. Nahina Naaz CAAF AMA	Ace Medical Clinic RB Jetpoint Complex Martintar <b>NADI</b>	6727530	6727532	<a href="mailto:dmahina.naaz@gmail.com">dmahina.naaz@gmail.com</a>

## SUVA

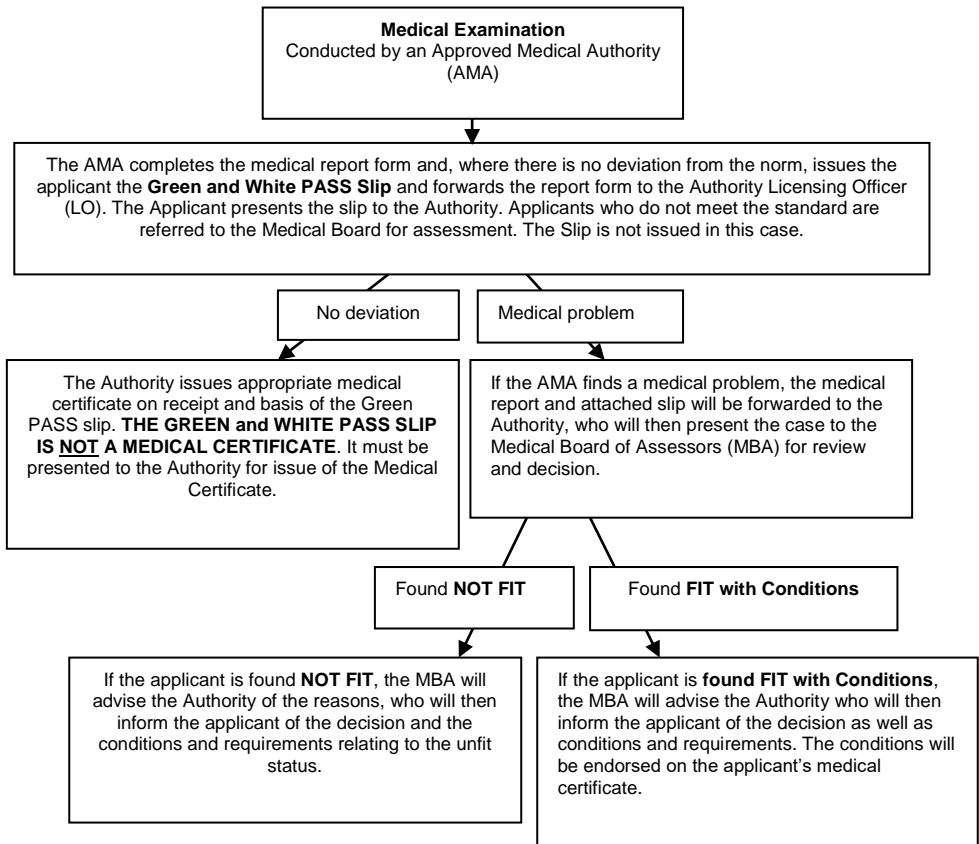
DOCTOR	ADDRESS	TEL	FAX	EMAIL
Dr Pardeep Ram CAAF Specialist ( <i>Ophthalmology</i> )	Laser Eye Centre Ltd Lautoka  P O Box 4723 Lautoka	9763727	-	<a href="mailto:pardeepram@yahoo.com">pardeepram@yahoo.com</a>
Dr Keshwan Nadan CAAF AMA	Makoi Health Centre GPO Box 15939 Suva	8010315 9954613	-	<a href="mailto:keshwan7@gmail.com">keshwan7@gmail.com</a>
Dr Rauni M Tikoinayau CAAF AMA	Epworth Clinic 254 Waimanu Rd Suva	2387032	-	<a href="mailto:tikoinayau2@gmail.com">tikoinayau2@gmail.com</a>

## 2.2 ABROAD

### NEW ZEALAND

DOCTOR	ADDRESS	TEL	EMAIL
Dr A Wiles CAAF AMA	320 Remuera Rd Auckland, New Zealand	+64 95246504	<a href="mailto:wiles@remueradoctors.co.nz">wiles@remueradoctors.co.nz</a>

### 3. Flowchart of Medical Examination Process



#### 4. Summary of Minimum Periodic Requirements

LICENCE	CLASS 1	CLASS 2	CLASS 3	CLASS 4
	AIRLINE TRANSPORT PILOT	PRIVATE PILOT	AIR TRAFFIC CONTROLLER	AIRCRAFT MAINTENANCE ENGINEER
	COMMERCIAL PILOT	STUDENT PILOT	FLIGHT INFORMATION SERVICE OFFICER (1 <sup>st</sup> ISSUE ONLY)	AERONAUTICAL FACILITY TECHNICIAN **
	PRIVATE PILOT W/ INST RTG			FLIGHT INFORMATION SERVICE OFFICER (subsequent issues)
VALIDITY OF CERTIFICATE ROUTINE MEDICAL EXAMINATION	< 40 – 1 yr	< 40 - 5 yrs	< 40 - 4 yrs	< 40 - 4 yrs
	≥ 40 – 6 months	> 40 - 2 yrs	> 40 – 2 yrs > 60 – 1 yr	> 40 – 2 yr > 60 – 1yr
CHEST X-RAY	At initial	If indicated	At initial	If indicated
ELECTROENCEPHALOGRAM	At initial	If indicated	At initial	If indicated
HAEMOGLOBIN	At initial then every examination	At initial	At initial then If indicated	At initial
ELECTROCARDIOGRAM	<u>At initial then:</u>	<u>At initial after age of then:</u>	<u>At initial then after age of:</u>	-
	30 – 50 - 2 yrs	> 40 - 2 yrs > 50 – 1 yr	> 50 – 2 yrs	-
AUDIOGRAM	<u>At initial then:</u> < 40 - 5 yrs	<u>At initial then:</u>	<u>At initial then:</u> < 40 - 4 yrs	<u>At initial then:</u> < 40 - 4 yrs
	≥ 40 - 2 yrs	≥ 50 - 2 yrs	≥ 40 - 2 yrs	≥ 40 - 2 yrs
EXTENDED OTORHINOLARYNGOLOGICAL EXAMINATION	If indicated	If indicated	If indicated	If indicated
EXTENDED OPHTHALMOLOGICAL EXAMINATION	At initial then:	At initial then:	At initial then:	At initial then:
	If indicated	If indicated	If indicated	If indicated
LIPID PROFILE	At initial then:	At initial then:	At initial then:	At initial then:
	If indicated	If indicated	If indicated	If indicated
PULMONARY FUNCTION TESTS	At initial then:	At initial then:	At initial then:	At initial then:
	If indicated	If indicated	If indicated	If indicated
URINALYSIS	At initial then every examination	At initial then every examination	At initial then every examination	At initial then every examination

#### 5. Appeal Process

- 5.1 Applicants for the issue/renewal of a CAAF Medical Certificate may wish to appeal a decision made by the CAAF Medical Board which has resulted in the applicant as being assessed, either temporarily or permanently, unfit to hold a Medical Certificate.

- 5.2 Should an applicant decide to lodge an appeal then this must be submitted to the Chief Executive of CAAF in writing, no later than 14 days after the applicant has received written notification from CAAF with regard to their medical status. Applicants should also state their reasons for lodging an appeal and include any documentation which would assist the Chief Executive in his deliberations.
- 5.3 After arriving at a decision, the Chief Executive will convey in writing, the results of the appeal to the applicant and include, if appropriate, any further information that he considers relevant to the appeal process.
- 5.4 Although no time limit is specified on the appeal process, applicants are assured that any appeals lodged to the Chief Executive will be processed expeditiously.

**6. Medical Validity Period**

- 6.1 A medical examination can be conducted by an AMA up to a maximum of 45 days prior to the expiry date of the existing medical certificate without a reduction of the 6- or 12-month validity period of the medical certificate which is subsequently issued.

**7. Medical Board Assessment Schedule**

- 7.1 The Medical Board sitting for 2024;

Month	Date
January	16 <sup>th</sup>
February	13 <sup>th</sup>
March	19 <sup>th</sup>
April	17 <sup>th</sup>
May	15 <sup>th</sup>
June	19 <sup>th</sup>
July	17 <sup>th</sup>
August	14 <sup>th</sup>
September	18 <sup>th</sup>
October	15 <sup>th</sup>
November	19 <sup>th</sup>
December	17 <sup>th</sup>

For any special sitting outside these scheduled published days, will incur a special sitting fees of \$750 to be settled by the licence holder 2 working days prior to the meeting and the availability of the Medical Board Members.